



2026 CORPORATE CATALOG

Samsonite

**AMERICAN
TOURISTER**

hartmann

TABLE OF CONTENTS

SAMSONITE

PARALUX.....	3
ASCELLA 4.0	7
MOBILE SOLUTIONS 2.....	11
MOBILE SOLUTIONS LEATHER.....	19
BETTER THAN BASIC.....	23

HARTMANN

HARTMANN TWEED	27
----------------------	----

AMERICAN TOURISTER

KONTOUR	34
STRATUM 3.0.....	35
4 KIX 3.0	36
FASTFORWARD.....	37

Samsonite



PARALUX

Introducing the Paralux Collection — a true masterpiece in the art of organization and crafted from more sustainable materials.

Hardside luggage features a traditional middle opening plus an innovative front door that gives you easy access to your belongings and included packing cubes.

Bags and duffels are equipped with thoughtful, sophisticated details and pockets so you can customize how you organize for each trip.

PARALUX HARDSIDE LUGGAGE



reddot winner 2025



Collection Materials:

156523	Global Carry-On	21.7 x 9.1 x 15.1	7.2 lbs.
156524	Domestic Carry-On	23.0 x 10.0 x 14.9	7.4 lbs.
156525	Medium Spinner	26.4 x 11.9 x 18.7	8.6 lbs.
156526	Large Spinner	29.2 x 12.5 x 19.9	10.9 lbs.

Features:

- RightHeight™ pull handle
- Suspension wheel technology
- Removable packing cubes and compression panel
- Holder for your AirTag™ Device
- 1 inch expansion
- Dual Access: Front door access + traditional center opening
- Quick Entry to grab your phone, passport, 15" laptop, etc (Carry-Ons only)
- Eazy Hook™ for carrying an extra bag

Color Grid:

MIDNIGHT NAVY - 1552



**1041
BLACK**



**1633
OLIVE**



**1830
STONE GREY**

PARALUX 2-IN-1 TRAVEL BACKPACK



Collection Materials:

156435 2-1 Travel Backpack 11.0 x 17.3 x 8.7 3.4 lbs.

Features:

- Holder for your AirTag™ Device
- Expandable Water Bottle Pocket
- StackIt™ Strap
- Removable sternum straps
- Dedicated Laptop Compartment

Color Grid:

STONE GREY - 1830



1041
BLACK



1633
OLIVE



1552
MIDNIGHT NAVY



reddot winner 2025

PARALUX EVERYDAY BACKPACK

Collection Materials:

156433 Everyday Backpack 11.0 x 16.9 x 7.1 2.7 lbs.

Features:

- Interior Organization
- Holder for your AirTag™ Device
- Removable Teckit™ Pouch
- Dedicated Laptop Compartment
- Front pocket with key leash
- Dual side zip pockets
- StackIt™ Strap

Color Grid:

OLIVE - 1633



WEEKENDER DUFFEL

Collection Materials:

156434 Weekender Duffel 17.7 x 10.2 x 7.9 2.2 lbs.

Features:

- Padded bail handles
- Separate 2" drop bottom compartment for shoes, dirty clothes, and more
- Holder for your AirTag™ Device
- Detachable strap with shoulder pad
- Front zip pocket with key leash
- Interior zip pocket
- Smart Sleeve™ Strap

Color Grid:

BLACK - 1041



ASCELLA 4.0

Constructed of approachable tonal materials, punctuated with durable accents, this is the perfect collection for your trip.



ASCELLA 4.0 LUGGAGE



Collection Materials:

157042	Carry-On Spinner	19.1 x 11.0 x 9.1	2.4 lbs.
157040	Medium Spinner	18.0 x 28.0 x 11.0	8.8 lbs.
157041	Large Spinner	20.5 x 32.5 x 13.5	10.3 lbs.

Features:

- Dual spinner wheels offer 360-degree effortless maneuverability on any surface
- Durable Polyester with tonal accents
- Max-capacity interior, including a modesty pocket, mesh door pocket, and smart fix™ buckles
- Removable TSA wet pak pouch
- 1" Expansion

Color Grid:

CERULEAN - 9543



**1041
BLACK**



**A569
DUSK PURPLE**

ASCELLA 4.0 UNDERSEATER



Collection Materials:

157043 2W Underseater 13.5 x 15.0 x 8.2 6.3 lbs.

Features:

- Inline skate wheels
- Durable Polyester with tonal accents
- Front opening zip panel with mesh pocket on door
- Main interior compartment includes SmartFix™ buckles
- Exterior side pocket
- StackIt™ strap

Color Grid:

BLACK - 1041

ASCELLA 4.0 GARMENT BAG



Features:

- Inline skate wheels
- Durable Polyester with tonal accents
- Max-capacity interior, extender panel that folds out to easily pack longer items
- Dual hanger hooks to convert into a hanging wardrobe.
- Wetpack™ pocket on the main panel, as well as multiple interior packing pockets

Collection Materials:

157044 Garment Bag 24.0 x 20.5 x 9.5 10.7 lbs.

Color Grid:

BLACK - 1041

DUFFEL



Collection Materials:

157039 Duffel 19.5 x 11.8 x 9.8 2.5 lbs.

Color Grid:

BLACK 1041

Features:

- Durable Polyester with tonal accents
- Large open packing compartment
- Front stash pocket
- StackIt™ strap on the back
- Quick access USB pass through

MOBILE SOLUTION 2

The new Mobile Solutions collection blends effortless style with graceful sophistication. Updated with pebbled leather-like trim, custom hardware and zippers in a champagne gold hue, this collection offers office-ready ease with everyday versatility.

Each piece is thoughtfully designed to carry your essentials—whether you're navigating busy workdays, commuting, or traveling for business. Clean lines, smart organization, and subtle refined details ensure you look as put-together as you feel, from desk to departure and beyond.



MOBILE SOLUTION 2



TOTE



Collection Materials:

157217 Tote 20.5 x 12.6 x 7.5 1.4 lbs.

Features:

- Interior organization includes a zippered pocket, 2 pen sleeves, and 2 slip pockets
- Dual side water bottle pockets
- StackIt™ Strap on the back zippered pocket fits over most upright luggage handles
- Zippered front pocket includes a key leash

Color Grid:

BLACK - 1041



**2136
MERLOT**

MOBILE SOLUTION 2 DELUXE BACKPACK



Collection Materials:

157213 Deluxe Backpack 12.6 x 16.7 x 6.7 1.5 lbs.

Features:

- Interior zippered pocket
- Dual zippered side water bottle pockets
- Adjustable, padded shoulder straps
- StackIt™ Strap fits over most upright luggage handles
- Zippered front pocket with key leash, pen sleeve, and 2 slip pockets

Color Grid:

MERLOT - 2136



1041
BLACK



MOBILE SOLUTION 2 CONVERTIBLE BACKPACK

Features:

- Interior organization includes zippered pocket and water bottle sleeve
- Interior water bottle sleeve
- Front zippered pocket with key leash, pen sleeve, and 2 slip pockets
- StackIt™ Strap fits over most upright luggage handles
- Convertible design:
- Wear as a backpack, tote or crossbody
- Adjustable, padded shoulder straps can be stored away when not in use
- Removable crossbody strap can be adjusted up to 56"

Collection Materials:

157214 Convertible Backpack 13.4 x 15.8 x 4.5 1.8 lbs.

Color Grid:

BLACK - 1041



ESSENTIAL BACKPACK

Features:

- Interior organization includes a zippered pocket, 2 slip pockets, and 2 pen sleeves
- Interior water bottle sleeve
- Adjustable, padded shoulder straps
- StackIt™ Strap fits over most upright luggage handles
- Zippered front pocket includes a key leash

Color Grid:

MERLOT - 2136

 **1041
BLACK**



Collection Materials:

157212 Essential Backpack 12.2 x 16.1 x 5.1 1.3 lbs.

MOBILE SOLUTION 2 CONVERTIBLE SLIM BRIEF



Features:

- Interior organization includes zippered pocket and water bottle sleeve
- Interior water bottle sleeve
- Front zippered pocket with key leash, pen sleeve, and 2 slip pockets
- StackIt™ Strap fits over most upright luggage handles
- Convertible design:
- Carry by the top handle, wear on your shoulder, or as a crossbody
- Removable crossbody strap can be adjusted up to 56"

Color Grid:

BLACK - 1041



Collection Materials:

157215 Convertible Slim Brief 14.9 x 10.8 x 2.5 1.0 lbs.

Collection Materials:

157218 RFID Waistpack 8.5 x 5.5 x 2.4 0.4 lbs.

Features:

- Main compartment features 2 slip pockets and is sized to fit standard wallet
- RFID protected front pocket Adjustable strap with a buckle.
- Strap length: up to 45"

Color Grid:

MERLOT - 2136

 **1041**
BLACK

RFID WAISTPACK



DUFFEL



Collection Materials:

157216 Duffel 19.1 x 13.2 x 7.8 1.5 lbs.

Features:

- Spacious main compartment with zippered storage pocket
- Removable crossbody strap can be adjusted up to 56"
- StackIt™ Strap fits over most upright luggage handles
- Zippered front pocket with key leash, pen sleeve, and 2 slip pockets

Color Grid:

BLACK - 1041



MOBILE SOLUTION 2

EXPANDABLE CARRY-ON



Collection Materials:

157219 Carry-On 14.2 x 20.5 x 9.5 7.8 lbs.

Features:

- RightHeight™ handle system with multiple 1-inch height adjustments Interior
- WetPack™ pocket, zippered lining storage pockets, and cross-straps
- Expands 1.5 inches
- Zippered front door
- Zippered front stash pocket
- Top and side carry handles

Color Grid:

MERLOT - 2136



**1041
BLACK**



MOBILE SOLUTION 2 SPINNER MOBILE OFFICE

Collection Materials:

157220 Spinner Mobile Office 16.5 x 15.0 x 6.5 8.6 lbs.

Features:

- Adjustable, 5-step trolley handle
- Main packing compartment with compression straps and file folder
- StackIt™ Strap fits over most upright luggage handles
- Front stash storage pocket
- First compartment features 2 large, slip pockets
- Zippered front pocket organization:
 - USB pass-through
 - Padded tablet sleeve (fits most 11" tablets)
 - 4 stash pockets
 - 2 card sleeves
 - 2 pen sleeves

Color Grid:

BLACK - 1041





MOBILE SOLUTION 2 LEATHER

Our favorite Mobile Solutions styles, now with real pebbled leather and a refined design aesthetic.

Created for modern, style-conscious professionals, each piece blends thoughtful organization and durability with elegant details and sculpted leather accents.

With timeless style that can elevate any outfit, this collection moves with you effortlessly from the office to off-duty hours—whether you're commuting, traveling, or heading out for the weekend.



MOBILE SOLUTION 2 LEATHER DELUXE BACKPACK



Collection Materials:

157481 Deluxe Backpack 9.8 x 16.5 x 6.7 2.2 lbs.

Features:

- Interior zippered pocket
- Dual zippered side water bottle pockets
- Adjustable, padded shoulder straps
- StackIt™ Strap fits over most upright luggage handles
- Zippered front pocket with key leash, pen sleeve, and 2 slip pockets

Color Grid:

BLACK - 1041



**1221
COGNAC**



**1633
OLIVE**

MOBILE SOLUTION 2 LEATHER TOTE



Collection Materials:

157484 Tote 19.8 x 13.0 x 7.1 2.3 lbs.

Features:

- Zippered main compartment
- Interior organization includes zippered storage pocket, water bottle sleeve, and key leash
- Stash zippered pocket for your phone
- Strap drop length: 12" Protective feet on the bottom
- StackIt™ Strap fits over most upright luggage handles

Color Grid:

COGNAC - 1221



**1041
BLACK**



**1633
OLIVE**

CONVERTIBLE BRIEF

Features:

- Zippered main compartment with magnetic flap
- Interior organization includes a zippered pocket, 2 slip pockets, and key leash
- Magnetic quick stash pocket on the back for your phone
- StackIt™ Strap fits over most upright luggage handles
- Convertible design:
- Carry by the top handle, wear on your forearm, or as a crossbody
- Removable crossbody strap can be adjusted up to 47"

Color Grid:

OLIVE -1633



**1221
COGNAC**



**1041
BLACK**



Collection Materials:

157482 Convertible Brief 15.0 x 11.8 x 4.8 2.6 lbs.

CROSSBODY

Collection Materials:

157483 Crossbody 8.5 x 5.5 x 2.4 0.9 lbs.

Features:

- RFID protected main pocket
- Main compartment features 2 slip pockets and key leash
- Zippered storage pocket on the back
- Adjustable strap length: up to 55"

Color Grid:

BLACK - 1041



**1221
COGNAC**



**1633
OLIVE**



BETTER THAN BASIC

Introducing Samsonite's Better Than Basic Collection. Styles and silhouettes created for everyday, with functionality and organization top of mind, this collection is perfect for a quick getaway or your next work trip.



DROP BOTTOM WEEKENDER

Collection Materials:

151758 Drop Bottom Weekender 18.9 x 14.2 x 9.8 2.9 lbs.

Features:

- Ribbed matte Polyester fabric
- RPET Lining
- Smooth PU Vinyl Accents
- Drop Bottom construction- perfect for shoes, clothes, or larger items you want to keep separate from the main compartment
- Large main zippered opening for easy packing
- Smart Sleeve™ trolley pass through feature with zippered storage pocket

Color Grid:

BLACK - 1041



**LIMESTONE
GREY
D733**



**NAVY
1596**



**MERLOT
2136**



**OLIVE
1633**



**VINTAGE BLUE
9173**



BTB CONVERTIBLE BACKPACK



Collection Materials:

156300 Conv. Backpack 15.5 x 12.6 x 6.5 1.6 lbs.

Features:

- Dual Carrying Options - Top handles and padded backpack straps for flexible wear
- Ribbed matte Polyester fabric
- RPET lining
- 2 internal pockets, pen sleeves, and zippered pocket
- Large doctor-bag style opening for easy access to your items
- Concealed front zipper pocket with key leash
- StackIt™ Strap trolley pass through feature
- Adjustable, padded shoulder straps for on-the-go comfort

Color Grid:

LIMESTONE GREY - D733



**1041
BLACK**

BTB BACKPACK



Collection Materials:

151906 Backpack 17.7 x 6.5 x 11.7 2.0 lbs.

Features:

- Ribbed matte Polyester fabric
- RPET Lining
- 2 exterior front pockets- 1 quick stash and 1 with slip pockets, pen sleeve, and Key Fob 2 side pockets for water bottles or quick storage
- Breathable Airmesh back panel Adjustable shoulder straps with breathable Airmesh padding for on-the-go comfort
- Smart Sleeve™ trolley pass through feature

Color Grid:

BLACK - 1041

 **LIMESTONE
GREY
D733**

 **NAVY
1596**

 **OLIVE
1633**

 **MERLOT
2136**

BTB TOTE



Collection Materials:

156301 Tote 12.5 x 16.25 x 6.0 1.8 lbs.

Features:

- Soft touch bail handles that fit effortlessly over the shoulder
- Ribbed matte Polyester fabric
- RPET lining
- Internal zippered pocket
- Zippered pockets on the front and back for quick access to your essentials
- StackIt™ Strap trolley pass through feature

Color Grid:

MERLOT - 2136



**D733
LIMESTONE
GREY**



**1041
BLACK**



**1633
OLIVE**

Since 1956, **THE TWEED COLLECTION** has been synonymous with the distinctive traveler. Today, the craftsmanship, heritage and style continue with an updated, more contemporary look.

Classic tweed fabric meets pebbled leather signature details and bespoke matte brass finish hardware.

Modern conveniences like Integrated TSA locks and RFID pockets offer the uncompromising upgrade and detail you expect.

What began as a new collection, was really the beginning of a journey over time.



hartmann

HARTMANN TWEED TRAVEL BACKPACK

Collection Materials:

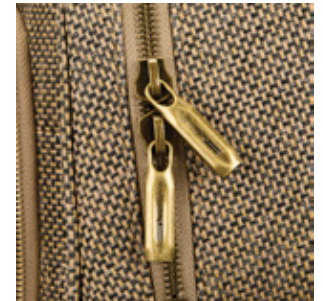
154299 Travel Backpack 16.5 x 5.3 x 11.8 3.1 lbs.

Features:

- Comfortable top grab handle in leather, with custom metal endcaps adds sophistication
- Separate laptop and tablet compartment with padding for protection *Sized to fit most 15" laptops and 13" tablets
- Spacious main compartment with an interior zippered pocket and multiple organization sleeves
- Comes with a removable Teckit with interior organization for your cables and other essentials
- Exterior water bottle sleeves with magnetic closures
- Stack it Strap on the back panel with a secret pocket
- Padded back panel and ergonomic backpack straps

Color Grid:

TWEED/NATURAL LEATHER - 4211



SLING BAG



Collection Materials:

154301 Sling Bag 13.0 x 3.9 x 9.0 1.5 lbs.

Features:

- Detachable straps allows the Sling to be worn on either shoulder
- Padded tablet sleeve inside the main compartment *Sized to fit most 11" tablets
- Main compartment has a wide opening and a secure metal zipper closure
- Front zippered compartment with RFID protection and a leather key fob leash

Color Grid:

TWEED/NATURAL LEATHER - 4211

HARTMANN TWEED TOTE

Collection Materials:

154307 Tote 12.6 x 6.3 x 18.5 3.5 lbs.

Features:

- Padded laptop sleeve inside the main compartment
*Sized to fit most 15" laptops
- Spacious main compartment with an interior zippered pocket and multiple organization sleeves
- Comes with a removable wristlet (with RFID protection). This fits perfectly in the front slip pocket and is easy to access
- Padded leather tote straps with custom metal endcaps adds sophistication
- Stack it Strap on the back panel with a secret pocket
- Leather key fob leash inside the front pocket

Color Grid:

TWEED/NATURAL LEATHER - 4211



HARTMANN TWEED DUFFEL



Collection Materials:

154300 Travel Duffel 11.8 x 11.8 x 20.5 4.9 lbs.

Features:

- Padded leather duffel handles for comfort and the removable crossbody strap with leather shoulder pad allows you to carry over the shoulder
- Spacious interior with multiple slip pockets and a padded sleeve for a laptop or magazines
*Sized to fit most 15" laptops
- Front zippered compartment with RFID protection and a leather key fob leash
- Large end-cap pockets on both sides with additional slip pocket and magnetic closure
- Stack It Strap on the back panel with a secret pocket

Color Grid:

TWEED/NATURAL LEATHER - 4211



HARTMANN TWEED SPINNERS



Collection Materials:

154302	22X14X9 Carry-On	22.0 x 14.0 x 9.0	9.2 lbs.
154303	Domestic Carry-On	22.8 x 15.0 x 10.3	9.5 lbs.
154304	Medium Journey	27.8 x 18.8 x 11.8	11.5 lbs.
154305	Extended Journey	32.3 x 21.3 x 13.5	13.0 lbs.

Features:

- Ergonomic infinity trolley handle with quarter inch height adjustments creates a very custom fit
- Steel, cartridge bearing wheels for ultimate stability and maneuverability
- Interior adjustable tie tapes keep belongings neatly secured
- Multiple interior pockets makes packing easy
- Removable leather ID tag with secure magnetic attachment
- Includes perfectly proportioned padded packing cube
- Included custom Hartmann luggage cover that extends the product's lifespan
- Matte brass finish on all hardware and hubcaps

Color Grid:

TWEED/NATURAL LEATHER - 4211



HARTMANN TWEED

SPINNER GARMENT BAG



Collection Materials:

154306 Garment Bag 22.5 x 11.5 x 22.3 13.8 lbs.

Features:

- Ergonomic infinity trolley handle with quarter inch height adjustments creates a very custom fit
- Steel, cartridge bearing wheels for ultimate stability and maneuverability
- Interior adjustable tie tapes keep belongings neatly secured
- Multiple interior pockets makes packing easy
- Removable leather ID tag with secure magnetic attachment
- Included custom Hartmann luggage cover that extends the product's lifespan
- Discreet front expansion zipper for additional packing volume when needed
- Ergonomic top and side carry handles with inset leather grip and brass finish endcaps
- Matte brass finish on all hardware and hubcaps

Color Grid:

TWEED/NATURAL LEATHER - 4211



AMERICAN TOURISTER



KONTOUR 2 PIECE SET



Collection Materials:

157925	Kontour 2Pc (Co/M)	17.5 x 25.6 x 11.5	17.0 lbs.
157924	Kontour 2Pc (Co/L)	20.0 x 30.6 x 12.6	19.4 lbs.

Features:

- Fully featured interior
- Dual Spinner Wheels
- 1.5" Expansion
- Push Button Locking Handles

Color Grid:

PAPAYA -2344



**A626
CORNFLOWER
BLUE**



**1041
BLACK**

STRATUM 3.0



Collection Materials:


156163	Carry On Spinner	15.0 x 22 x 9.5	7 lbs.
156164	Medium Spinner	17.8 x 27.8 x 11.0	8.8 lbs.
156165	Large Spinner	19.5 x 32.5 x 12.0	10.8 lbs.

Features:


- RightHeight™ handle adjusts to your comfort level
- Smooth-gliding, wide-set dual spinner wheels for easy maneuvering
- Durable hardside shell stands up to travel wear and tear
- Interior mesh U-shaped zippered divider
- Printed lining with zippered pocket for small essentials
- 1.5" of added expansion
- Elastic cross straps keep clothes in place and wrinkle-free
- Built-in EazyHook™ perfect for a small airport bag
- Sized to fit most overhead bins--perfect for weekend trips or short getaways

Color Grid:

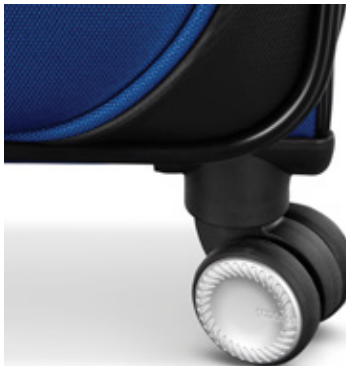
ELEMENTAL BLUE – A382

 E050
PINK BLUSH

 1041
BLACK

 A678
SURREAL GREEN

4 KIX 3.0



Collection Materials:

158585	Carry-On	14.0 x 20.5 x 7.5	7.5 lbs.
158586	Medium Spinner	17.3 x 24.5 x 8.8	8.8 lbs.
158587	Large Spinner	19.5 x 29.5 x 10.0	11.1 lbs.

Features:

- RightHeight handle adjusts to multiple heights
- Dual spinner wheels
- Custom designed co-molder zipper pullers and locking sliders on the main opening
- Easy to grab handles with PU trimmed tops and foam padded grips
- Zippered mesh and lining door pocket
- Zippered lining modesty pocket
- Elastic cross straps with ribbed elastic
- Accent color trim and liner fabric match body color
- New printed lining
- Expansion on all sizes for additional packing capacity

Color Grid:

SAPPHIRE BLUE - 0609



BLACK
1041



HYPER VIOLET
A839

FASTFORWARD



Collection Materials:

155259	Carry-On	15.8 x 21.7 x 9.4	5.1 lbs.
155261	Large Spinner	19.7 x 30.7 x 13.3	8.6 lbs.

Features:

- Lined texture flows into a triangular shape creating an eye-catching wrap effect
- Expands
- Soft touch handles
- Reverse main zipper
- Wheel housings with gloss finish
- Dual suspension wheels
- Sleek pullers with a brushed metal finish
- Integrated TSA lock
- Lined divider with elastic ribbons and mesh pocket
- Shirt pocket with hidden airtag holder (checked size only)
- Personalization on top with included sticker sheet

Color Grid:

STEEL BLUE - 1827



FLASH BLACK
361E



RADIANT ORANGE
0595



SUNSET CORAL
A683

Sams^onite

hartmann

**AMERICAN
TOURISTER**